

The Config Team™
SAP Logistics Specialists

The Config Team Overview

ABOUT THE CONFIG TEAM 3

OUR EXPERTISE 4

CONSULTANCY 5

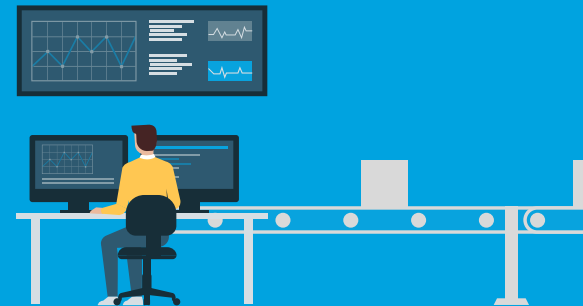
SUPPORT 6

MOBILITY SOLUTIONS..... 7

CODINGCONTROL 8

IDOC MANAGEMENT CONSOLE 9

INNOVATIVE SOLUTIONS 10



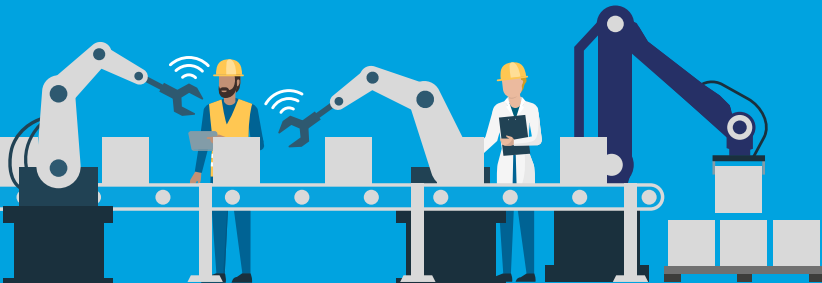
About The Config Team

We specialise in the design, development and implementation of innovative SAP Supply Chain solutions that deliver an integrated end-to-end supply chain process.

What sets us apart is that we only focus on the SAP Supply Chain, we do not offer a wider portfolio, meaning our customers benefit from extensive specialised knowledge, experience and innovation.

The leader in our field, we have been implementing supply chain solutions for more than 25 years for global brands across a diverse range of industries.

We adopt a collaborative approach to everything we do. We work together with our customers to deliver innovative solutions that really work for them and if we don't already have a solution, we will develop a new one.



Trusted Partner

We are an SAP Gold partner, offering the reassurance that SAP trusts us to implement its solutions.

Specialist Expertise

Our collective knowledge and experience of the SAP Supply Chain is unrivalled; it is what we know and is what we're passionate about.

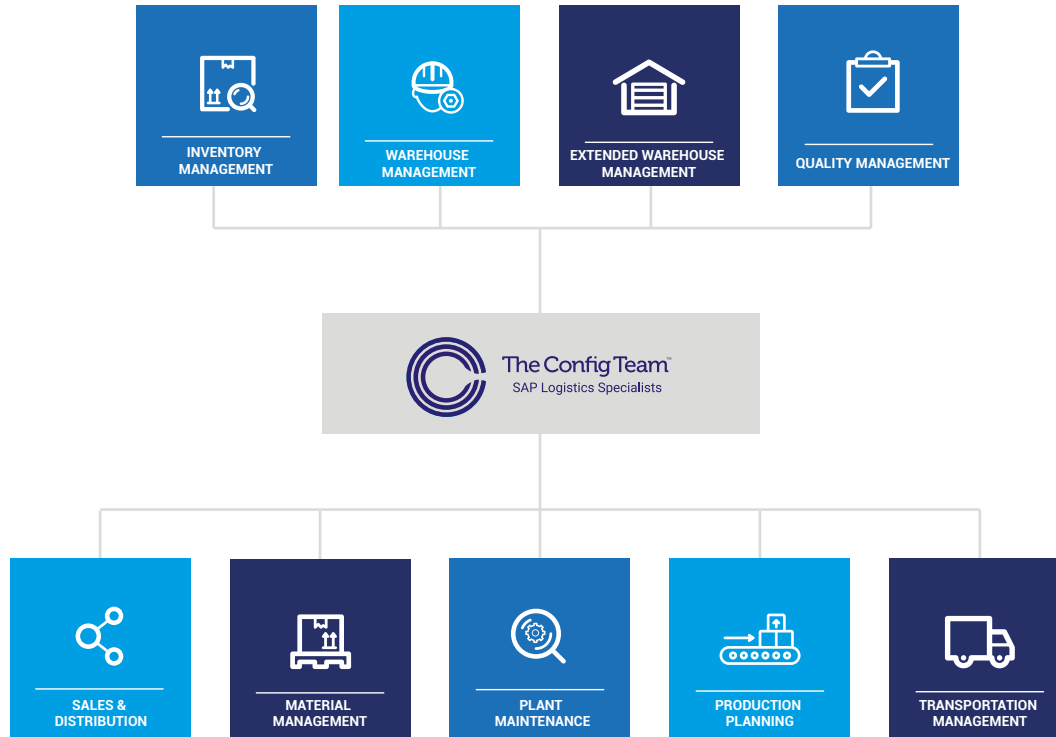
Strong Reputation

We have many long-standing customers that have been trusting us with their supply chain solutions year after year.

Continuing Innovation

We are continually developing new, innovative solutions that will work with the very latest supply chain advancements and technology.

Our Expertise



Consultancy

Our team of SAP Supply Chain consultants is passionate about working with you to deliver the right solution for your business. It is important to us that we don't just look at your business today, but also implement a solution that will deliver on your long-term business and operational needs.

The SAP Supply Chain is what we know, it is what we do, every day. Whether we are working on blueprint design, testing or implementation, we will ensure your SAP Supply Chain solutions exceed expectations.

We have a wide range of proven SAP Supply Chain solutions. However, we know every business and every project is different, which is why we have a dedicated team of developers that can create innovative, bespoke solutions to meet any individual challenges.

To maintain our position at the forefront of SAP Supply Chain solutions, we are continually looking to harness the latest technologies, be that new innovations in mobile, IoT or SAP S/4HANA.

Our Services include:

- SAP Supply Chain Troubleshooting
- SAP Supply Chain Roadmap
- Independent SAP Supply Chain Design Authority
- Warehouse Automation for SAP
- 3PL Integration Consulting
- SAP Shop Floor Integration
- SAP S/4HANA Logistics

With The Config Team you can benefit from:

- The biggest pool of SAP Supply Chain experts
- Independent, honest advice - no sales pitch
- A wide range of pre-built, tried and trusted SAP Supply Chain solutions
- A dedicated development team that can create innovative, bespoke solutions
- A proof of concept for a low risk investment
- UK based workforce





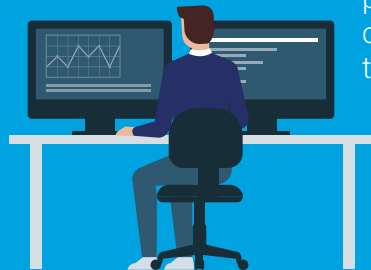
Support

Our knowledge of the SAP Supply Chain is unrivalled, so we are a preferred choice when selecting a support partner.

Our support service gives you access to the most experienced SAP technical experts, on demand, whenever you need them.

We have designed our support packages to offer complete flexibility. You can choose the level of support you need, whether that is a full-service contract or simply ad-hoc support.

Our support packages include remote help, onsite assistance and short-term upscaling for small projects, in addition to an online helpdesk, so you can easily track support status from your initial call through to resolution.



Mobility Solutions

Integrate a wide range of supply chain processes with SAP to access real-time data quickly and easily with our extensive portfolio of mobility solutions.

Our mobile solutions allow you to update paper-based processes or outdated technology to increase productivity, improve efficiency and reduce operational costs, all while enhancing the customer experience.

With more than 150 application solutions, each addressing a different business process, we have a mobile solution for any supply chain operation from stock receipt onto warehousing, production and through to customer deliveries.

Our SAP Supply Chain Mobility Solutions:

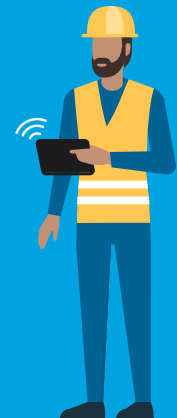
- Reduce paperwork
- Offer user-friendly navigation
- Can be customised to reflect your brand
- Include an ITS converter
- Provide real-time data visibility
- Delivery improved efficiency
- Are device agnostic

The platform allows support for:

- RFID
- GPS
- Sign-on-glass
- Camera - document scanning and photo evidence
- Media - display video and image
- Barcode scanning - 1D and 2D
- Working offline



Why not give our demo app a try and experience what mobile logistics are really like:

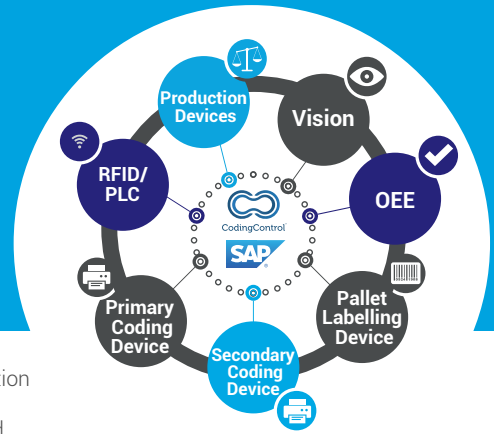


CodingControl

Eliminate costly barcoding and labelling errors with CodingControl™, our SAP Certified, easy to install solution.

A proven way to integrate your production line coding and labelling devices directly into SAP.

With CodingControl you can:



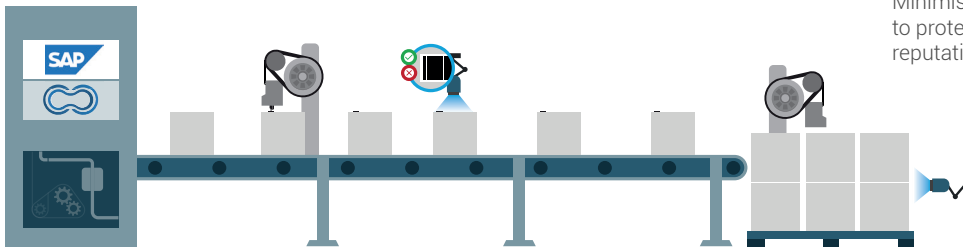
Eradicate the cost of errors caused by manual data entry or incorrect template selection.

Proactively react to device diagnostics and consumables through mobile alerts.

Achieve significant production cost savings through reduced product waste and recalls, increased production efficiency and improved Overall Equipment Efficiency (OEE).

Minimise product recalls to protect your brand reputation.

Boost quality assurance and audit traceability.



IDoc Management Console

Our SAP certified IDoc Management Console provides instant visibility of transactions from external systems within SAP, allowing you to manage and analyse end-to-end data flow throughout the business.

The solution allows instant access to IDocs through a simple user interface, with any failed IDocs instantly flagged up without the need to view several transactions.

The IDoc Management Console offers multiple benefits:



Full Integration

Works with any SAP module including SCM, SD, QM and FI



Easy to Use

Centralised dashboard pulls all information into one simple and intuitive interface



Configurable

Can be configured so that an operator only sees the information relevant to them



Functionality

View performance statistics, audit trails and reprocess or reset status



Quick Reactions

Quickly and easily monitor performance statistics and resolve errors

Innovative Solutions

Innovative, user-friendly solutions to improve accuracy and control over your supply chain process.



Voice Technology

Easily connect voice technology to SAP EWM and WM in real-time:

- Access to quantifiable worker productivity
- Reduces the cost of replacing damaged devices
- Works with different languages
- Improved job satisfaction



RFID

Move an entire pallet past an RFID reader and instantly get a record in SAP:

- Reduces the time it takes to scan barcodes
- Hard to scan labels are no longer an issue
- Stock location immediately available in SAP
- SAP uses a unique ID to record movement history



